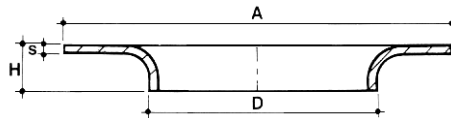


CARTELLE

LE CARTELLE O BORDI D'APPOGGIO PER TUBI VENGONO RICAVATE PER STAMPAGGIO DA LAMIERE DI ACCIAIO INOSSIDABILE E SI USANO SOLO CON FLANGE LIBERE UNI 6089 - 6090 (vedi pag. 3)  
NORMA: EN1092-1-33

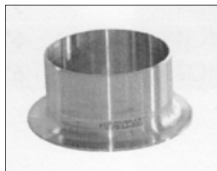
Per tubi a pollici gas: da 21,3 a 609,6  
Spessori: mm. 2 - 3 - 4



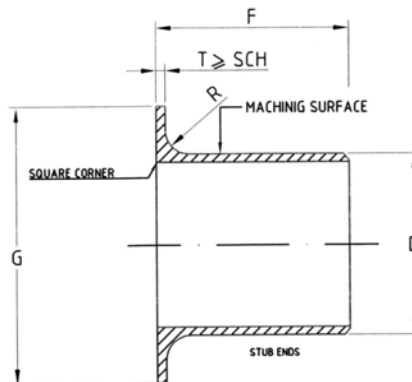
AISI 304L  
AISI 316L

DN		D mm	S mm	A mm	H mm
15	1/2"	21,3	2	45	6
20	3/4"	26,9	2	58	6
25	1"	33,7	2 ÷ 3	68	8
32	1.1/4"	42,4	2 ÷ 3	78	10
40	1.1/2"	48,3	2 ÷ 3	88	10
50	2"	60,3	2 ÷ 3	102	12
65	2.1/2"	76,1	2 ÷ 3	122	12
80	3"	88,9	2 ÷ 3	138	12
100	4"	114,3	2 ÷ 3	158	12
125	5"	139,7	2 ÷ 3	188	14
150	6"	168,3	2 ÷ 3	212	16
200	8"	219,1	2 ÷ 3	270	18
250	10"	273	3 ÷ 4	320	20
300	12"	323,8	3 ÷ 4	370	20
350	14"	355,6	3 ÷ 4	430	25
400	16"	406,4	3 ÷ 4	482	25
450	18"	457,0	3 ÷ 4	532	25
500	20"	508,0	3 ÷ 4	585	25
550	22"	558,0	3 ÷ 4	635	25
600	24"	609,6	3 ÷ 4	685	30

STUB END



Norme AME B 16.9  
SUPERFICI LAVORATE



"T" TOLLERANCE

1/2" -- 8"	+1.6
	0
10" -- 48"	+3.2
	0

SIZE NPS	OUTSIDE DIAMETER OF BARREL		LONG PATTERN LENGHT		SHORT PATTERN LENGHT		RADIUS OF FILLET		DIAMETER OF LAP		WALL THICKNESS	
	MAX	MIN	F	TOL	F	TOL	R	TOL	G	TOL	SCH 10S	SCH40S
1/2	22,8	20,5	76		51		3		35		2,11	2,77
3/4	28,1	25,9	76		51		3		43		2,11	2,87
1	35,0	32,6	102		51		3		51		2,77	3,38
1 1/4	43,6	41,4	102		51		5		64		2,77	3,56
1 1/2	49,9	47,5	102		51		6	+0	73		2,77	3,68
2	62,4	59,5	152		64		8	-1	92		2,77	3,91
2 1/2	75,3	72,2	152		64		8		105	+0	3,05	5,16
3	91,3	88,1	152		64		10		127	-1	3,05	5,49
3 1/2	104,0	100,8	152		76		10		140		3,05	5,74
4	116,7	113,5	152		76		11		157		3,05	6,02
5	144,3	140,5	203	2	76	2	11		186		3,40	6,55
6	171,3	167,5	203		89		13		216		3,40	7,11
8	222,1	218,3	203		102		13		270		3,76	8,18