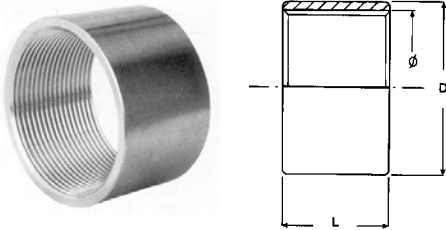


RACCORDI INOX FILETTATI AISI 304 - 316
STANDARD ISO 4144 - EN 10241

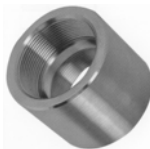
RICAVATI DA TUBO O DA BARRA. - FILETTATURE GAS
RATING NOMINALE PN 16. - TEMP.: 300 C°

MANICOTTI AISI 304 - 316L
(filettature gas cilindriche ISO228)



- ART. 297 MANICOTTO LUNGO "DIN"
- ★ ART. 298 MEZZO MANICOTTO
- ART. 299 MANICOTTO STANDARD
- ART. 300 MANICOTTO PESANTE

- ART. 744 MANICOTTO NPT AISI 316L

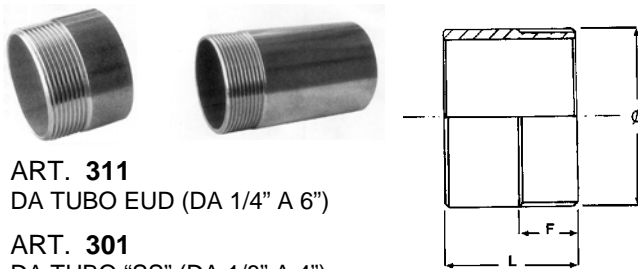


	ART. 300		ART. 299		ART. 298		ART. 297		ART. 744	
	D	L	D	L	D	L	D	L	D	L
1/8"	14	18							18	25
1/4"	18	18				10/13	18	18	22	32
3/8"	22	21				10	22	26	25	36
1/2"	27	25			26	15/20	26	34	30	45
3/4"	32	30	31	29	32	12,5/20	32	36	40	45
1"	40	34			40	20/25	40	43	40	45
1-1/4"	50	36			48	20	48	46	50	50
1-1/2"	60	38	56	38	55	20	56	48	60	60
2"	69	45	68	42	70	20/25	68	56	75	60
2-1/2"	89	45	84	45	85/90	22/25	84	65	90	60
3"	100	50	96	50			95	71	100	70
4"	127	50	123	50			124	83		
5"	160	70	150	60						
6"			180	80						

★ ARTICOLO SOGGETTO A QUANTITATIVI MINIMI DI FORNITURA.

MISURE PASSIBILI DI VARIAZIONI.

TRONCHETTI (filettature gas coniche ISO7)



- ART. 311
DA TUBO EUD (DA 1/4" A 6")
- ART. 301
DA TUBO "SS" (DA 1/8" A 4")
- ART. 104L
DA TUBO EUD TIPO LUNGO (DA 1/4" A 4")
- ART. 104XL
DA TUBO EUD TIPO EXTRALUNGO (DA 2" A 4")

ART. 311 - 301

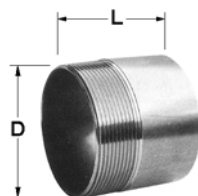
ART. 104 L - XL

Ø	L	F	Ø	L	F
1/8"	20	10	1/4"	100	12
1/4"	22	12	3/8"	100	12
3/8"	22	12	1/2"	100	15
1/2"	25	15	3/4"	100	15
3/4"	30	15	1"	100	17
1"	35	17	1 1/4"	100	18
1 1/4"	40	18	1 1/2"	100	20
1 1/2"	45	20	2"	100-150	22
2"	50	22	2 1/2"	100-150	23
2 1/2"	50	23	3"	100-150	26
3"	50	26	4"	100-200	28
4"	50	28			
5"	60	30			
6"	85	30			

★ **TRONCHETTI NPT**

ART. 712030
AISI 316L

ARTICOLO SOGGETTO A QUANTITATIVI MINIMI DI FORNITURA.



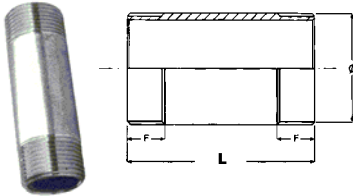
	DxL	BOX		DxL	BOX		DxL	BOX
1/8"	12x20	10	3/4"	28x40	10	2"	60x60	5
1/4"	14x25	10	1"	35x30	10	2 1/2"	75x60	1
3/8"	18x28	10	1 1/4"	42x40	5	3"	90x60	1
1/2"	22x33	10	1 1/2"	50x46	5	4"	114x60	1

RACCORDI INOX FILETTATI AISI 304 - 316

RICAVATI DA BARRA E DA TUBO EUD - SS - SERIE "ISO" 4144 - PN 16 - NORMA EN 10241

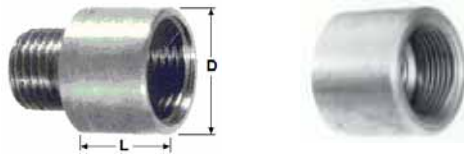
ART. 530-L-XL BARILOTTO

AISI 304
★ AISI 316



Ø	L	F
1/4"	80-100	12
3/8"	80-100	12
1/2" - 3/4"	80-100-200	15
1"	80-100-200	17
1 1/4"	100-200	18
1 1/2"	100-200	20
2"	100-200	22
2 1/2"	100-200	23
3"	100-200	26
4"	100-200	28

MANICOTTI RIDOTTI AISI 304-316



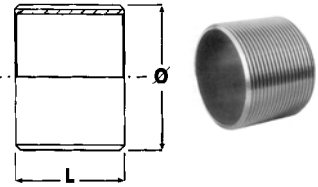
ART. 529

ART. 240

	D	L
3/8" x 1/4"	22	20
1/2" x 3/8" - 1/4"	26	25
3/4" x 1/2"	32	30
1" x 3/4"	40	35
1 1/4" x 1"	50	38
1 1/2" x 1 1/4"	55	40
2" x 1 1/2"	70	42
2 1/2" x 2"	85	48
3" x 2 1/2"	100	50

ART. 312

NIPPLI SENZA ESAGONO



Ø	L
1/8"	20
1/4" - 3/8"	25
1/2" - 3/4"	30
1"	35
1 1/4"	38
1 1/2"	40
2" - 3"	45
4"	50

ART. 246

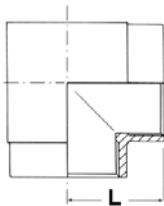
PROLUNGA MF
AISI 316L

- 1/4" CH. 17
- 3/8" CH. 19
- 1/2" CH. 24
- 3/4" CH. 30
- 1" CH. 36
- 1 1/4" CH. 46
- 1 1/2" CH. 50



ART. 309

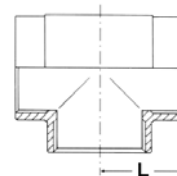
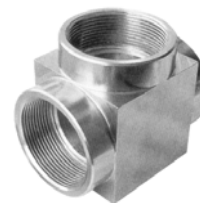
GOMITO FF



Ø	L
1/8"	18
1/4"	20
3/8"	23
1/2"	28
3/4"	32
1"	33
1 1/4"	45
1 1/2"	48

ART. 308

TEE FFF



Ø	L
1/8"	18
1/4"	20
3/8"	23
1/2"	28
3/4"	32
1"	33
1 1/4"	45
1 1/2"	48

★ **ART. 313**

GOMITI MF AISI 304

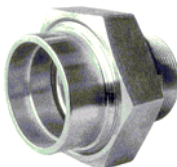
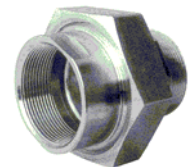
RICAVATI DA PIENO
DA 1/4" A 1 1/2"



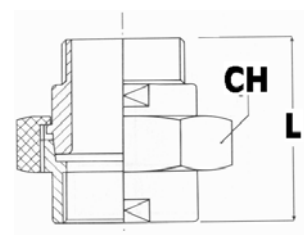
★ ARTICOLO SOGGETTO
A CONFEZIONI MINIME
DI FORNITURA.

ART. 341 BOCCHETTONE MF SEDE CONICA DA BARRA

ART. 342 BOCCHETTONE SEDE CONICA DA BARRA
A SALDARE A TASCA SENZA FRESATURE
SUI MANICOTTI.



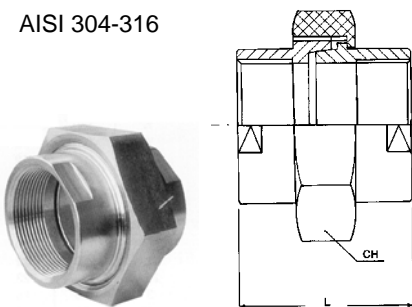
Ø	L	CH
1/8" - 1/4"	41	32
3/8"	43	36
1/2"	46	46
3/4"	52	50
1"	56	55
1 1/4"	62	70
1 1/2"	65	75
2"	75	90



RACCORDI INOX FILETTATI AISI 304 - 316
 RICAVATI DA BARRA - SERIE "ISO" PN 16 - EN10241

ART. 302 BOCCHETTONE FF
 SEDE CONICA
 DA BARRA

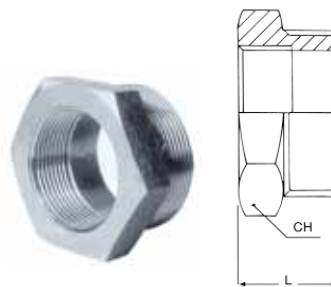
AISI 304-316



Ø	L	CH
1/8" - 1/4"	41	30
3/8"	43	36
1/2"	46	41
3/4"	52	46
1"	56	55
1 1/4"	62	65
1 1/2"	65	70
2"	75	85
2 1/2"	83	117*
3"	98	125*

* 2 PIANI FRESATI

ART. 306
 RIDUZIONE
 MASCHIO FEMMINA



Ø _M	÷ Ø _F	L	CH
1/4" ÷ 1/8"		20	15
3/8" ÷ 1/4"	3/8" ÷ 1/8"	22	19
1/2" ÷ 3/8"	1/2" ÷ 1/4"	23	24
3/4" ÷ 1/2" ÷ 3/8"	3/4" ÷ 1/4"	26	30
1" ÷ 3/4" ÷ 1/2"	1" ÷ 3/8" ÷ 1/4"	30	36
1 1/4" ÷ 1" ÷ 3/4"	1 1/4" ÷ 1/2"	30	46
1 1/2" ÷ 1 1/4"	1 1/2" ÷ 1"	35	50
2" ÷ 1 1/2"	2" ÷ 1 1/4"	36	65
2 1/2" ÷ 2"	2 1/2" ÷ 1 1/2"	44	80*
3" ÷ 2 1/2"	3" ÷ 2"	50	100
4" ÷ 3"	4" ÷ 2 1/2"	55	120*

* 2 PIANI FRESATI

★ **ART. 766019**

NIPPO NPT
 AISI 316L

★ **ART. 766069**

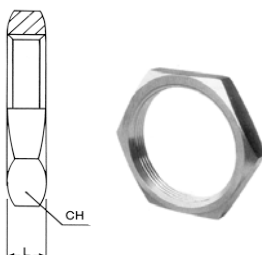
NIPPO
 NPT x ISO 228
 AISI 316L



	CH	L
1/8"	14	22
1/4"	14	30
3/8"	17	34
1/2"	27	43
3/4"	32	46
1"	36	49
1 1/4"	41	52
1 1/2"	50	58
2"	65	62

ART. 105

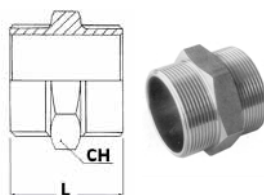
CONTRODADO AISI 304



Ø	L	CH
1/4"	6	19
3/8"	7	27
1/2"	8	30
3/4"	9	36
1"	10	46
1 1/4"	11	50
1 1/2"	12	60 / 65
2"	13	70
2 1/2"	14	90
3"	15	104 F

ART. 303

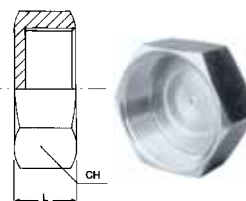
NIPPO ISO 228



Ø	L	CH
1/8"	28	13
1/4"	30	15
3/8"	34	19
1/2"	38	24
3/4"	43	30
1"	46	36
1 1/4"	50	46
1 1/2"	58	50
2"	60	65
2 1/2"	70	80
3"	80	95
4"	90	125

ART. 305

TAPPO FEMMINA

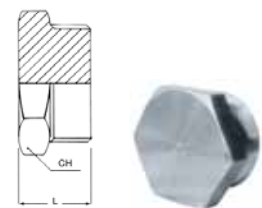


Ø	L	CH
1/8"	14	15
1/4"	16	19
3/8"	17	24
1/2"	19	27
3/4"	20	32
1"	22	40 - 41
1 1/4"	25	50
1 1/2"	29	55
2"	29	65
2 1/2"	32	85*
3"	33	100*
4"	38	124*

* 2 PIANI FRESATI

ART. 304

TAPPO MASCHIO



Ø	L	CH
1/8"	20	13
1/4"	20	15
3/8"	22	19
1/2"	23	24
3/4"	26	30
1"	30	36
1 1/4"	30	46
1 1/2"	35	50
2"	36	65
2 1/2"	44	80*
3"	50	95*
4"	55	120*

* 2 PIANI FRESATI

RACCORDI INOX FILETTATI AISI 304 - 316

RICAVATI DA BARRA E DA TUBO EUD - SS - SERIE "ISO" PN 16 - NORMA EN 10241

★ **ART. 762160**

TAPPO MASCHIO
NPT
AISI 316L



	CH	L
1/8"	14	14
1/4"	14	19
3/8"	17	21
1/2"	22	24
3/4"	27	27
1"	36	31
1"1/4	46	35
1"1/2	50	36
2"	65	41

ART. 766016

NIPPLO MASCHIO ISO 228
CILINDRICO X ISO 7 CONICO
AISI 316L



	CH	L
1/8"	14	22
1/4"	14	27
3/8"	17	31
1/2"	22	40
3/4"	27	42
1"	36	48
1"1/4	46	54
1"1/2	50	56
2"	65	63
2"1/2	80	75

ART. 766009

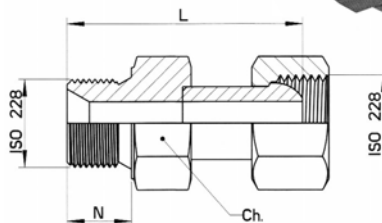
NIPPLO RIDOTTO ISO 228
MASCHIO-MASCHIO
AISI 316L



	CH	L
1/4" x 1/8"	14	24
3/8" x 1/4"	17	27
1/2" x 3/8" - 1/4"	22	32
3/4" x 3/8"	27	36
3/4" x 1/2"	27	38
1" x 1/4"	36	40
1" x 1/2"	36	42
1" x 3/4"	36	44
1"1/4 x 1"	46	54
2" x 3/4"	61	54
2" x 1"	61	56
2"1/2 x 2"	80	67
3" x 2"	90	67
3" x 2"1/2	90	70
4" x 3"	115	70

ART. 765060

GIUNTO GIREVOLE
FEMMINA-MASCHIO
CON OGIVA ISO 228
AISI 316L



	N	CH	L
1/4" x 1/4"	11	19	42
1/4" x 3/8"	11	19/22	45
3/8" x 3/8"	13	22	48
1/2" x 1/2"	15	27	55
3/4" x 3/4"	17	32	66
1" x 1"	19	41	75

ART. 766015

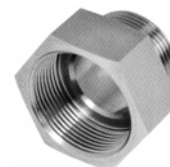
NIPPLO ISO 228
CILINDRICO



	CH	L
1/8"	14	22
1/4"	14	26
3/8"	17	27
1/2"	22	34
3/4"	27	40
1"	36	46
1"1/4	46	56
1"1/2	50	58
2"	61	60
2"1/2	76	68
3"	90	75

ART. 767016 - AISI 316L

FEMMINA - MASCHIO
ISO 228 CILINDRICO

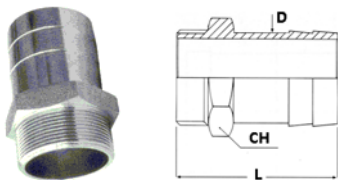


	CH	L
1/4" x 1/8"	19	25
3/8" x 1/8"	22	26
3/8" x 1/4"	22	28
1/2" x 1/8"	27	27
1/2" x 1/4"	27	29
1/2" x 3/8"	27	31
3/4" x 1/2"	32	35
1" x 1/2"-3/4"	36	42-43
1"1/4 x 1/2"	46	42
1"1/4 x 1"	46	44
1"1/2 x 1/2"	55	42
1"1/2 x 1"1/4	55	44
2" x 1/2"	66	44
2" x 1"	66	46
2" x 1"1/4-1"1/2	66	46
3" x 2"1/2	95	55
4" x 3"	125	70

RACCORDI INOX FILETTATI AISI 304 - 316

RICAVATI DA BARRA E DA TUBO EUD - SERIE "ISO" PN 16 - EN10241

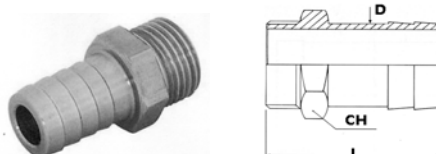
ART. 310 (304-316)
PORTAGOMMA ISO7



Ø	L	CH	D
1/8"	22	13	10
1/4"	24	15	14
3/8"	28	19	17
1/2"	32	24	21
3/4"	36	30	27
1"	36	36	30 / 33
1 1/4"	40	46	42
1 1/2"	48	50	48
2"	60	65	60
2 1/2"	64	80	75
3"	67	95	88
4"	70	120	113

★ **ART. 763028**

PORTAGOMMA ISO228 AISI 316L
DIAMETRI 1 1/2" - 2" ANCHE AISI 304



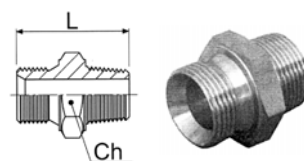
	CH	L	D
1/8"	14	30	6
1/4"	14	30	6
1/4"	14	36	8-10-12
3/8"	17	38	8-10-12
1/2"	22	42	10
1/2"	22	45	13-15-17
1/2"	22	48	17
3/4"	27	51	16
3/4"	27	56	19-21
3/4"	27	57	25
1"	36	60	19
1"	36	65	25
1 1/4"	46	75	38
1 1/2"	50	80	40
1 1/2"	52	80	50
2"	62	85	50
2"	62	90	60

★ **ART. 766065**

NIPPLO AISI 316L
OGIVA ISO228 x NPT

★ **ART. 766060**

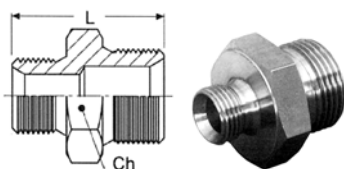
NIPPLO AISI 316L
OGIVA ISO228 x ISO7



	CH	L
1/8" x 1/8"	17	22
1/4" x 1/4"	19	29
3/8" x 3/8"	22	34
1/2" x 1/2"	27	39
3/4" x 3/4"	32	44
1" x 1"	41	50
1 1/4" x 1 1/4"	50	56
1 1/2" x 1 1/2"	55	58
2" x 2"	65	66
2 1/2" x 2 1/2"	85	80

★ **ART. 766080**

NIPPLO RIDOTTO
AIS I 316L OGIVA - OGIVA



	CH	L
1/4" x 1/8"	19	26
3/8" x 1/8"	22	29
3/8" x 1/4"	22	32
1/2" x 1/4"	27	35
1/2" x 3/8"	27	37
3/4" x 1/4"	32	38
3/4" x 3/8"	32	40
3/4" x 1/2"	32	42
1" x 1/2"	41	48
1" x 3/4"	41	50
1 1/4" x 3/4"	50	52
1 1/4" x 1"	50	54
1 1/2" x 1"	55	55
1 1/2" x 1 1/4"	55	57
2" x 1 1/4"	70	64
2" x 1 1/2"	70	66

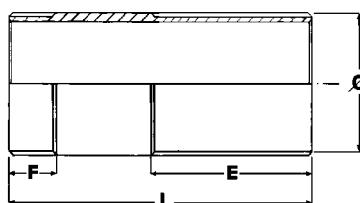
ART. 158

PILETTA AISI 304
FILETT. ISO 228
CON GUARNIZIONE ALIMENTARE



1/2"
3/4"
1"
1 1/4"
1 1/2"
2"

ART. 900 (AISI304)
CANNOTTO O TRAPASSO
PER BOTTE FIL. ISO 228

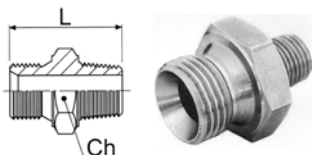


Ø	L	F	E
1/2"	125	20	70
3/4"	125	20	70
1"	150	25	90
1 1/2"	200	35	120
2"	200	35	120

RACCORDI INOX FILETTATI AISI 316
 RICAVATI DA BARRA

★ **ART. 766090**

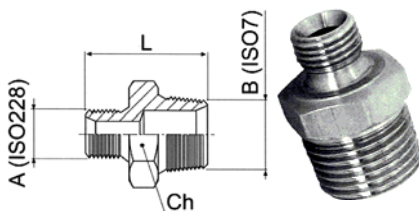
NIPPLO RIDOTTO
 OGIVA ISO228 x ISO7
 AISI 316L



	CH	L
1/4" x 1/8"	19	28
3/8" x 1/8"	22	31
3/8" x 1/4"	22	34
1/2" x 1/4"	27	37
1/2" x 3/8"	27	37
3/4" x 1/4"	32	38
3/4" x 3/8"	32	40
3/4" x 1/2"	32	42
1" x 1/2"	41	46
1" x 3/4"	41	48
1"1/4 x 3/4"	50	52
1"1/4 x 1"	50	54
1"1/2 x 1"	55	55
1"1/2 x 1"1/4	55	57
2" x 1"1/4	70	65
2" x 1"1/2	70	66

★ **ART. 766095**

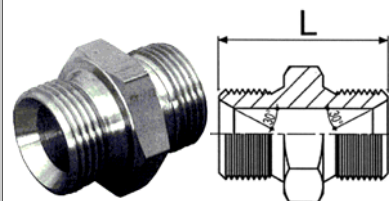
NIPPLO RIDOTTO
 OGIVA ISO228 x ISO7
 AISI 316L



	CH	L
1/4" x 1/8"	17	25
3/8" x 1/8"	17	28
3/8" x 1/4"	19	31
1/2" x 1/4"	22	34
1/2" x 3/8"	22	36
3/4" x 1/4"	27	38
3/4" x 3/8"	27	40
3/4" x 1/2"	27	42
1" x 1/2"	36	46
1" x 3/4"	36	48
1"1/4 x 3/4"	46	50
1"1/4 x 1"	46	52
1"1/2 x 1"	50	55
1"1/2 x 1"1/4	50	57
2" x 1"1/4	65	62
2" x 1"1/2	65	63
2"1/2 x 2"	80	74

★ **ART. 766050**

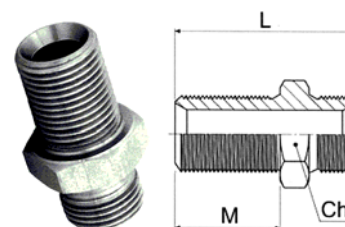
NIPPLO
 OGIVA - OGIVA
 ISO228 - AISI 316L



	CH	L
1/8"	17	22
1/4"	19	29
3/8"	22	34
1/2"	27	39
3/4"	32	44
1"	41	50
1"1/4	50	56
1"1/2	55	58
2"	70	69

★ **ART. 766052**

NIPPLO PASSALAMIERA
 OGIVA - OGIVA
 ISO228 - AISI 316L

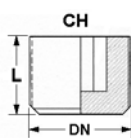


	CH	L	M
1/8"	17	31	17
1/4"	19	38	20
3/8"	22	44	23
1/2"	27	50	26
3/4"	32	56	29
1"	41	63	32

★ ARTICOLO SOGGETTO A CONFEZIONI MINIME DI FORNITURA.

ART. AX79K

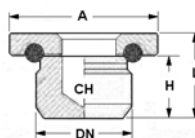
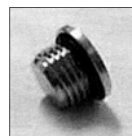
TAPPO
 CONICO
 INCASSATO
 COD. IDENT. RAK



DN	L	CH
1/8	8	5
1/4	10	6
3/8	10.5	8
1/2	13	10

ART. AX570OR

TAPPO CON "OR"
 ED ESAGONO
 COD. IDENT. RAK



DN	H	L	A	CH
1/8	5.5	8.5	14	4
1/4	6.5	9	17	6
3/8	7.5	10.5	20	8
1/2	9	12	24	10