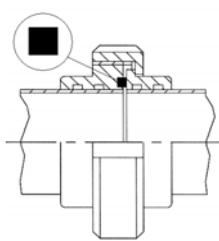
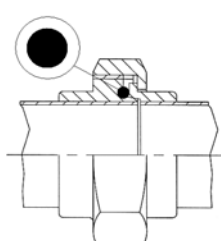


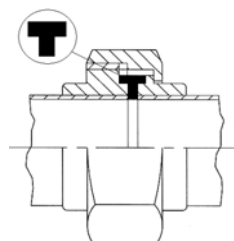
RACCORDO "DIN"



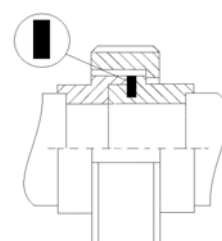
RACCORDO "SMS"



RACCORDO "RJT - BS"



RACCORDO "ISS - IDF"

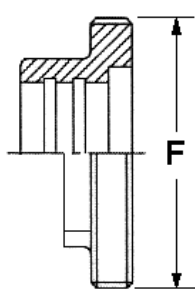


RACCORDO "MACON"

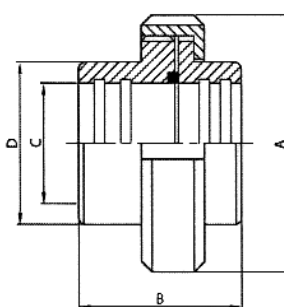
RACCORDI "SMS"

COD. IDENT. RXS

MATERIALI: AISI 304L - 316L
 GUARNIZIONI: EPDM - NBR - VITON - SILICONE - PTFE



DN	F mm.	Passo
25	40	1/6
38	60	1/6
51	70	1/6
63	85	1/6
76	98	1/6
101	132	1/6
104	125	1/4



DN	A	B	C	D
25	51,0	38,0	25,4	32,0
38	74,0	44,0	38,1	48,0
51	84,0	46,0	50,8	61,0
63	100,0	56,0	63,5	73,5
76	114,0	66,0	76,2	86,0
101	154,0	61,0	101,6	116,0
104	140,0	61,0	104,0	112,0

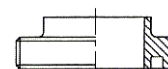
FEMMINA A MANDRINARE



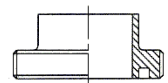
MASCHIO A MANDRINARE



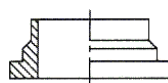
FEMMINA CORTA A SALDARE



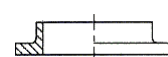
FEMMINA A SALDARE



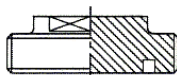
MASCHIO A SALDARE



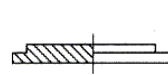
MASCHIO CORTO A SALDARE



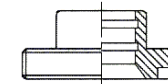
TAPPO FEMMINA



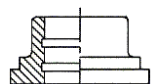
TAPPO MASCHIO



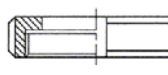
FEMMINA RIDOTTA A MANDRINARE ED A SALDARE



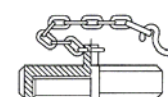
MASCHIO RIDOTTO A MANDRINARE ED A SALDARE



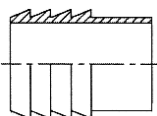
GIRELLA AISI 304L



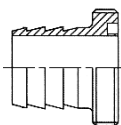
GIRELLA CIECA CON CATENELLA AISI 304L



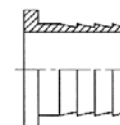
PORTAG. A SALDARE mm. 28,6 - 41,3 - 54 66,7 - 79,4 - 109



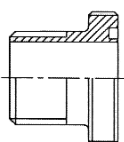
PORTAGOMMA FEMMINA



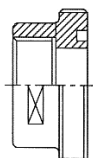
PORTAGOMMA MASCHIO



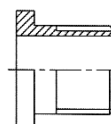
FEMMINA CON FILETTO GAS MASCHIO



FEMMINA CON FILETTO GAS FEMMINA



MASCHIO CON FILETTO GAS MASCHIO



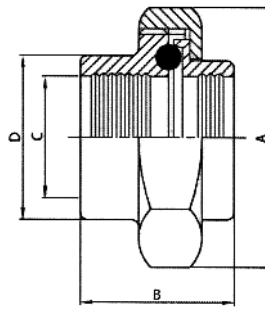
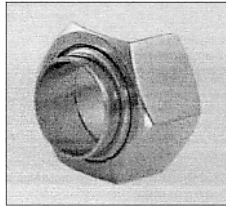
MASCHIO CON FILETTO GAS FEMMINA



RACCORDI "RJT BS"

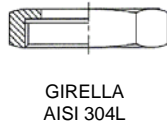
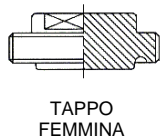
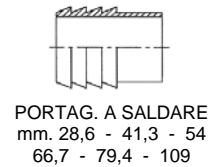
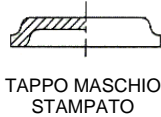
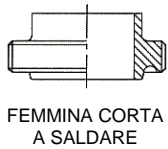
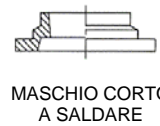
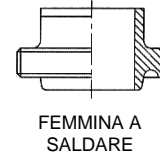
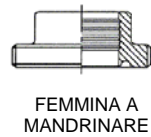
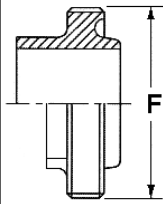
COD. IDENT. **RBS**

MATERIALI: AISI 304L - 316L
 GUARNIZIONI: EPDM
 VITON
 SILICONE



DN	A	B	C	D
25	51,0	41,0	25,4	32,5
38	65,0	49,0	38,1	45,2
51	80,0	57,0	50,8	58,0
63	92,0	65,0	63,5	70,6
76	104,0	65,0	76,2	83,3
101	130,0	65,0	101,6	109,0

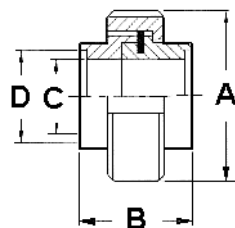
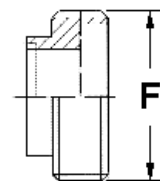
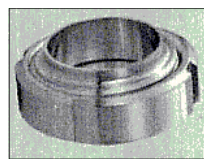
DN	F mm.	Passo
25	46	1/8
38	58	1/8
51	73	1/6
63	85	1/6
76	98	1/6
101	123	1/6



RACCORDI "MACON"

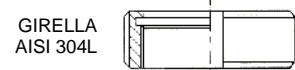
COD. IDENT. **RXM**

MATERIALI: AISI 304L - 316L
 GUARNIZIONI: EPDM

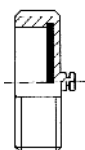


DN	A	B	C	D
40	70,0	37,0	40,0	43,3
50	80,0	37,0	50,0	53,3
60	99,0	37,0	60,0	63,6
70	105,0	37,0	70,0	73,3
80	116,0	37,0	80,0	83,3
100	140,0	37,0	100,0	104,0

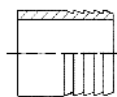
DN	F mm.	Passo
40	55	1/3
50	67	1/3
60	79	1/3,5
70	90	1/3,5
80	102	1/4
100	125	1/4



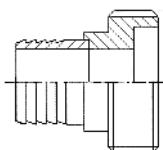
RACCORDI "MACON"



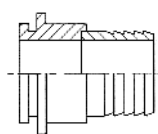
GIRELLA
CIECA
AISI 304L



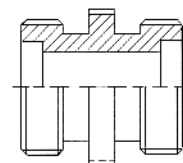
PORTAGOMMA DA
SALDARE AISI 316L
mm. 43 - 53
63,5 - 73 - 83



FEMMINA CON
PORTAGOMMA
AISI 316L



MASCHIO CON
PORTAGOMMA
AISI 316L



GIUNZIONE A DOPPIA
FEMMINA
AISI 316L

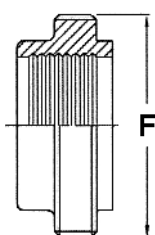
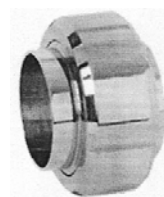
RACCORDI "ISS IDF"

COD. IDENT. RDS

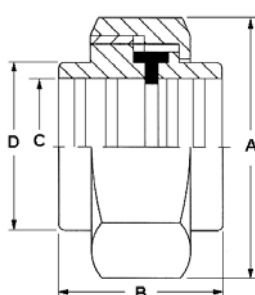
MATERIALI: AISI 304L - 316L

GUARNIZIONI: EPDM - VITON - SILICONE

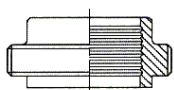
GIRELLA (AISI 304L) ESAGONALE - TONDA CON E SENZA FRESATURE



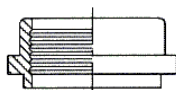
DN	F mm.	Passo
25	37	1/8
38	50	1/8
51	64	1/8
63	77	1/8
76	91	1/8
101	118	1/8



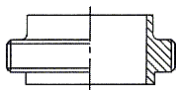
DN	A	B	C	D
25	46,0	40,0	25,4	29,0
38	60,0	43,0	38,1	42,5
51	75,0	48,0	50,8	56,0
63	90,0	58,0	63,5	69,7
76	105,0	63,0	76,2	82,3
101	134,0	63,0	101,6	108,4



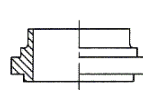
FEMMINA A
MANDRINARE



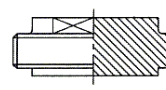
MASCHIO A
MANDRINARE



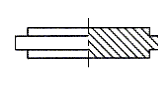
FEMMINA A
SALDARE



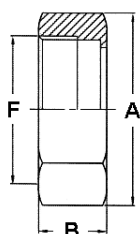
MASCHIO
A SALDARE



TAPPO
FEMMINA

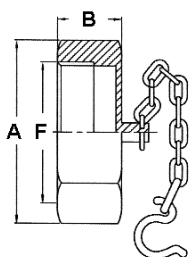


TAPPO MASCHIO

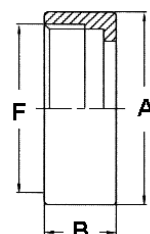


GIRELLA
ESAGONALE

DN	A	B	F
25	46,0	30,0	37-8
38	60,0	30,0	50-8
51	75,0	30,0	64-8
63	90,0	30,0	77-8
76	105,0	30,0	91-8
101	134,0	30,0	118-8

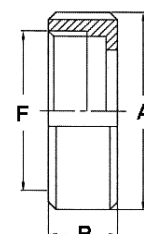


GIRELLA ESAGONALE
CON CATENELLA

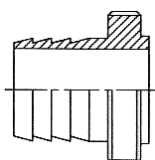


GIRELLA
TONDA

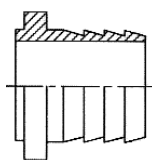
DN	A	B	F
25	44,5	30,0	37-8
38	57,0	30,0	50-8
51	70,0	30,0	64-8
63	85,5	30,0	77-8
76	101,5	30,0	91-8
101	129,0	30,0	118-8



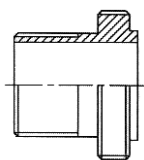
GIRELLA TONDA
CON FRESATURE



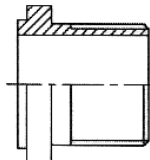
PORTAGOMMA
FEMMINA



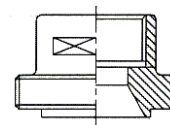
PORTAGOMMA
MASCHIO



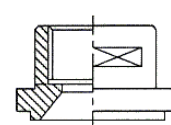
FEMMINA CON
FILETTO GAS
MASCHIO



MASCHIO CON
FILETTO GAS
MASCHIO



FEMMINA CON
FILETTO GAS
FEMMINA



MASCHIO CON
FILETTO GAS
FEMMINA