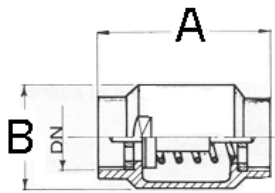
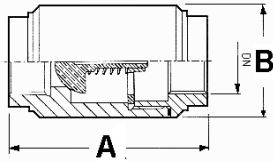


VALVOLE INOX DI RITEGNO

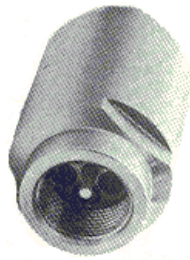
ART. 316

VALVOLA DI RITEGNO ASSIALE IN AISI 316 CON TENUTA IN PTFE E MOLLA INOX GUIDATA. PN 16

3/8" - 1/2" - 3/4" - 1"



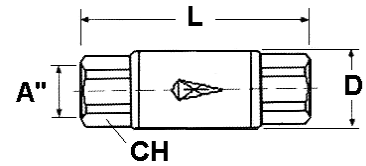
DA 1"1/4 A 4"



DN	A	B
3/8"	57	32
1/2"	64,5	35
3/4"	80	45
1"	95	50
1 1/4"	100	60
1 1/2"	110	70
2"	130	85
2 1/2"	140	110
3"	140	130
4"	160	155

ART. VX57

VALVOLA DI RITEGNO IN AISI 316 + VITON PN 40



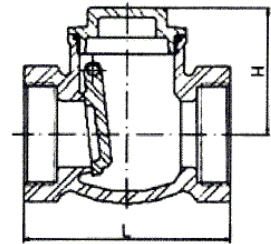
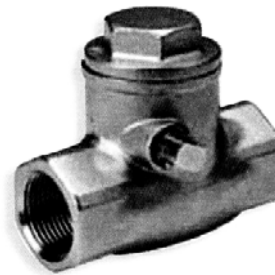
A"	L	D	CH
1/8"	50	22	17
1/4"	50	22	17
3/8"	67	30	22
1/2"	71	30	24
3/4"	78	35	32
1"	90	42	38



ART. 0790B

Valvola di ritegno a clapet in AISI 316.

TENUTA METALLICA
PN. Max = 16 bar
T. max = 180 C°



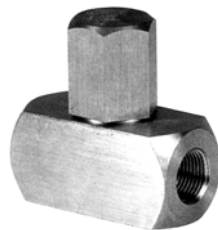
DIAM.	PN	H	L	Kg.
1/2"	16	44	65	0,312
3/4"	16	53	80	0,490
1"	16	58	90	0,724
1 1/4"	16	62	105	1,042
1 1/2"	16	73	120	1,650
2"	16	78	141	2,392

ART. MG340

VALVOLA DI RITEGNO A SPILLO CON MOLLA SERIE S 3000

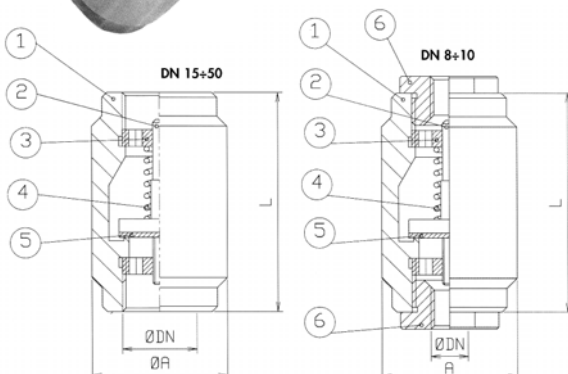
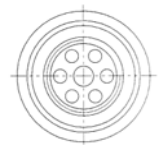
DIAMETRI DA 1/4" A 2"
ESECUZIONE IN ACCIAIO INOX
O ACCIAIO AL CARBONIO

A RICHIESTA: NPT
SW
BW
BW CON NIPPLI



ART. MG100

VALVOLA DI RITEGNO ASSIALE IN AISI 316 O ACCIAIO AL CARBONIO - TENUTA IN PTFE - PN 100
A RICHIESTA: S3000 - S6000 - ATTACCHI SW



PART	DESCRIZIONE	*ASTM A105	*ASTM A182F316/L
1	CORPO	*ASTM A105	*A182F316/L
2	OTTURATORE	*ASTM A182F316	*A182F316/L
3	GHIERA	*ASTM A105	*A182F316/L
4	MOLLA	*AISI 316	*AISI 316
5	GUARNIZIONE	*PTFE	*PTFE
6	NIPPLI	*AISI 316	*AISI 316

Dimensioni

DN	1/4"	3/8"	1/2"	3/4"	1"	1.1/4"	1.1/2"	2"
DN	8	10	15	20	25	32	40	50
A	40	40	40	50	50	60	70	80
L	80	80	65	75	80	90	95	100