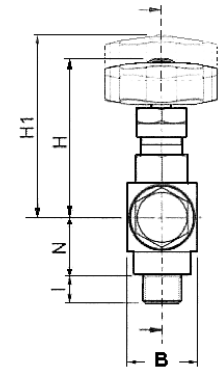
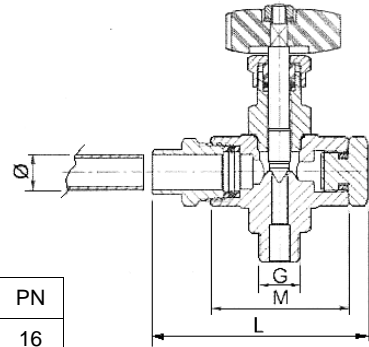


RUBINETTI E PORTALIVELLI INOX 316

ART. 688006

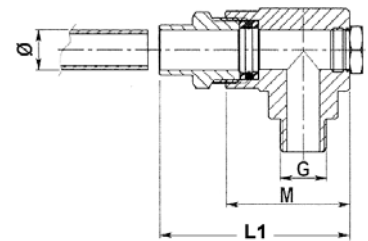
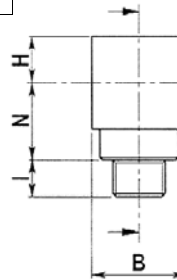
Rubinetto PORTALIVELLO inferiore
 Organo di comando: Volantino
 Attacco: ISO 228 filettatura maschio
 Materiale: Aisi 316
 Misure: da 3/8" a 1"
 Temperatura di esercizio: -50°C +200°C
 Finitura esterna: Lucida



G	∅	L	L1	B	M	N	I	H	H1	PN
3/8"	12-14-16	85	65	30	56	25	12	72	80	16
1/2"	12-14-16	85	65	30	56	25	12	72	80	16
1"	20	83	80	40	53	25	14	110	127	16

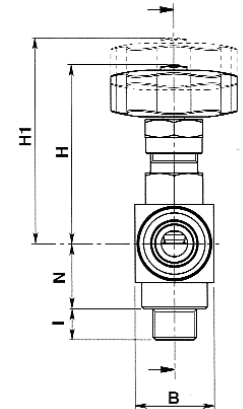
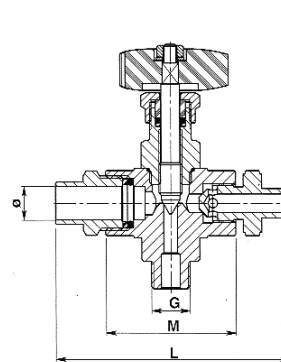
ART. 680005

Gomito PORTALIVELLO
 Attacco: ISO 228 filettatura maschio
 Materiale: Aisi 316
 Misure: da 3/8" a 1"
 Temperatura di esercizio: -50°C +200°C
 Finitura esterna: Lucida



ART. 688005

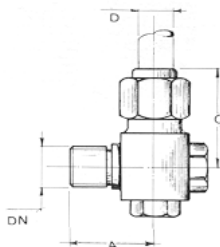
Rubinetto PORTALIVELLO inferiore
 Organo di comando: Volantino
 Attacco: ISO 228 filettatura maschio
 Materiale: Aisi 316
 Misure: da 3/8" a 1"
 Temperatura di esercizio: -50°C +200°C
 Finitura esterna: Lucida



G	∅	L	B	M	N	I	H	H1	PN
3/8"	12-14-16	100	30	56	25	12	72	80	16
1/2"	12-14-16	100	30	56	25	12	72	80	16
1"	20	95	40	59	25	14	110	127	16

PORTALIVELLO SUPERIORE IN AISI 316 CON GUARNIZIONE SUL TUBO IN SILICONE

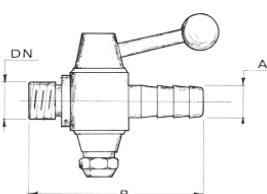
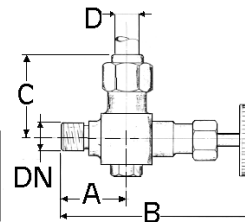
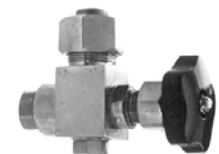
ART. 304



DN	A	B	C	D
1/2"	42	135	50	15
3/4"	50	160	62	17

PORTALIVELLO INFERIORE IN AISI 316 CON RUBINETTO DI INTERCETTAZIONE, GUARNIZIONE SUL TUBO IN SILICONE E TAPPO POSTERIORE PER L'APPLICAZIONE DEL PRELIEVOCAMPIONI.

ART. 305



DN	A	B
1/4"	12	60
3/8"	12	60
1/2"	16	69

ART. 312

RUBINETTO A MASCHIO PRELIEVOCAMPIONI DA POTER APPLICARE SULL'ART. 305 FILETTATURA MASCHIO.

