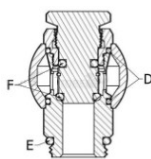


RUBINETTI E VALVOLE INOX

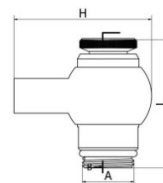


ART. VRI 379

Rubinetto AISI 304 salvagoccia per liquidi densi. Attacco ISO 228/1 3/8" - 1/2"



Posizione Orings: D-E-F

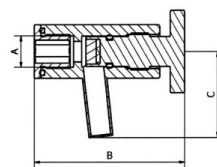


DIMENSIONI		
DN-A	H	L
3/8"	56	53
1/2"	56	53

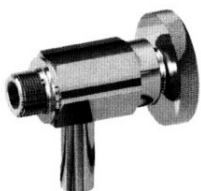


ART. VRI 381

Prelievo campioni AISI 316 Attacco ISO 228/1 Femmina 3/8" Con ghiera foro esagonale Ch. 10

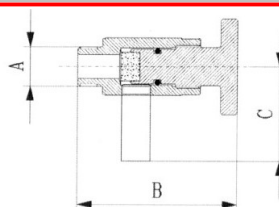


DIMENSIONI		
DN-A	B	C
3/8"	68	40



ART. VRI 385

Prelievo campioni AISI 316 Attacco ISO 228/1 1/4" - 3/8" - 1/2"



DIMENSIONI		
DN-A	B	C
1/4"	68	40
3/8"	68	40
1/2"	68	40



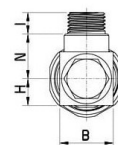
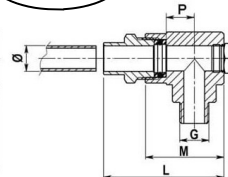
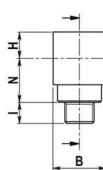
ART. 680005

Porta livello superiore, attacco ISO 228 maschio, in AISI 316L Guarnizioni in PTFE Orings in FKM Da 3/8" a 1" con finitura lucida. Temp. -20° C. +160° C.

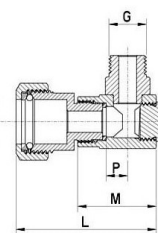
A richiesta:

attacco tubo diverso. Certif. MOCA 1935/2004

3/8"-1/2"



1"



G	∅ (tubo)	L	B	M	P	N	I	H	PN	Kg.
3/8"	12 - 14 - 16	65	30	44	12	25	12	15	16	0,300
1/2"	12 - 14 - 16	65	30	44	12	25	12	15	16	0,310
1/2"	24	78	30	44	12	25	12	15	16	0,460
1"	20	60	40	50	18	25	14	20	16	0,610



DIMENSIONI



ART. 688006

Porta livello superiore e/o inferiore, comando a volantino, attacco ISO 228 maschio.

Materiale: AISI 316L

Guarnizioni in PTFE

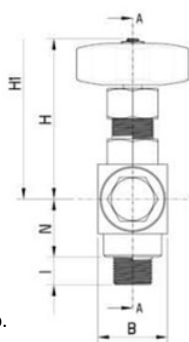
Orings in FKM

Da 3/8" a 1" con finitura lucida.

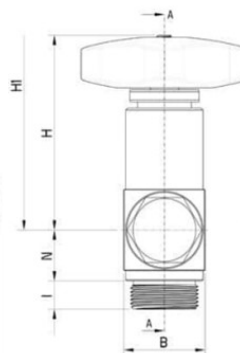
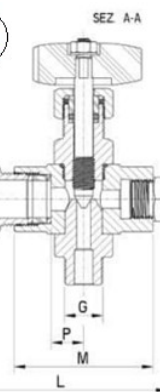
Temp. -50° C. +200° C.

A richiesta: attacco tubo diverso.

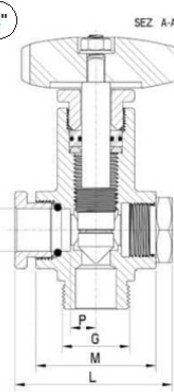
Certif. MOCA 1935/2004



3/8"
1/2"

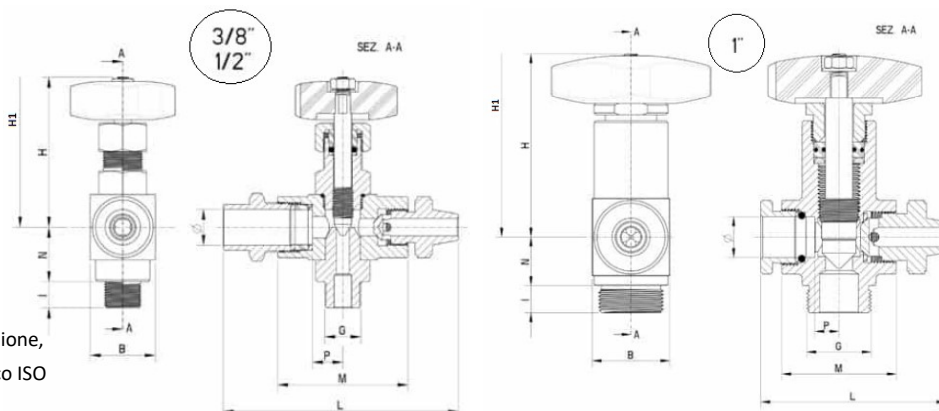


1"



G	∅ (tubo)	L	B	M	P	N	I	H	H1	PN	Kg.
3/8"	12 - 14 - 16	85	30	56	14	25	12	72	80	16	0,500
1/2"	12 - 14 - 16	85	30	56	14	25	12	72	80	16	0,520
1/2"	24	100	30	60	14	25	12	72	80	16	1,060
1"	20	83	40	53	18	25	14	110	127	16	1,200

RUBINETTI E VALVOLE INOX



ART. 688005

Porta livello inferiore con prelievo campione, comando a volantino (in bakelite) attacco ISO 228 maschio.

Materiale: AISI 316L

Guarnizioni in PTFE, Orings in FKM

Da 3/8" a 1" con finitura lucida.

Temp. -20° C. +160° C.

A richiesta: attacco tubo diverso.

Certif. MOCA 1935/2004

G	Ø (tubo)	L	B	M	P	N	I	H	H1	PN	Kg.
3/8"	12 - 14 - 16	104	30	60	14	25	12	72	80	16	0,540
1/2"	12 - 14 - 16	104	30	60	14	25	12	72	80	16	0,560
1/2"	24	118	30	60	14	25	12	72		16	0,710
1"	20	95	40	60	18	25	14	110	127	16	1,290



ART. 678201

Rubinetto regolatore di portata con volantino graduato. Attacco ISO 228 femmina.

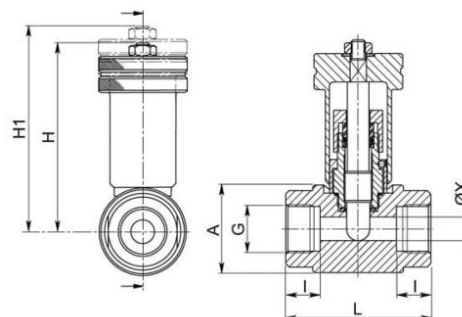
Materiale: AISI316L

Guarnizioni in PTFE - PTFE+vetro,

Orings in FKM

Da 1/2" a 1 1/2" con finitura lucida.

Temp. -20° C. +160° C.



A richiesta: sistema antistatico ATEX

II 2G Ex h IIC T4 Gb

II 2D Ex h IIIC T 135°C Db

Certif. MOCA 1935/2004

Volantino in bakelite non graduato.

G	L	I	A	H	H1	Ø X	PN	Kg.
1/2"	60	14	■ 30	68	74	8,5	100	-
3/4"	80	19	Ø 48	105	116	13	100	-
1"	80	19	Ø 48	105	116	13	100	-
1 1/4"	90	19	Ø 60	109	124	18	100	2,210
1 1/2"	90	19	Ø 60	109	124	18	100	2,090

ART. 658001

Rubinetto a spillo con volantino in bakelite

Attacco ISO 228 femmina.

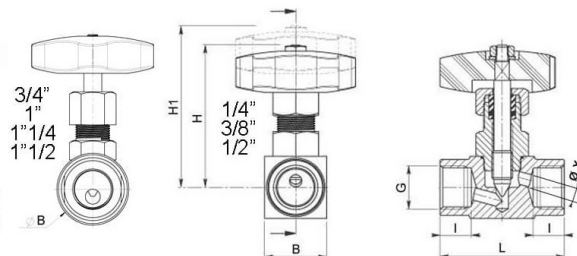
Materiale: AISI316L

Guarnizioni in PTFE - PTFE+vetro,

Orings in FKM

Da 1/4" a 1 1/2" con finitura lucida.

Temp. -20° C. +160° C.



A richiesta: sistema antistatico ATEX

II 2G Ex h IIC T4 Gb - II 2D Ex h IIIC T 135°C Db

Certif. MOCA 1935/2004

Asta prolungata per fissaggio a pannello.

Attacchi NPT (1/4" - 1"), clamp (1/2" - 1"),

flangiati EN 1092 (DN 10 - DN 25)

Flangiati EN 1759-1 classe S150 (1/2" - 1")

Con volantino graduato (da 1/4" a 1")



G	L	I	B	H	H1	Ø X	PN	Kg.
1/4"	45	10	■ 25	70	78	4	160	0,260
3/8"	53	11	■ 25	70	78	5	160	0,290
1/2"	60	14	■ 30	72	80	6	160	0,400
3/4"	80	17	Ø 48	102	117	10	100	1,120
1"	80	19	Ø 48	102	117	10	100	1,040
1 1/4"	90	19	Ø 60	114	130	16	100	1,680
1 1/2"	90	19	Ø 60	114	130	16	100	1,550